



Sustainable Agriculture Initiative Platform
The global food and drink industry initiative for sustainable agriculture



Newsletter - January 2016

Key Topics

[Promoting and Partnering for Sustainable Agriculture](#)

[SAI Platform Developments](#)

[FSA Progress Update](#)

[Upcoming Training & Events](#)

Promoting and Partnering for Sustainable Agriculture

How SAI Platform and its members are contributing to the new Sustainable Development Goals and global climate deal...

Our world before 12/12/2015 and after...Check out this inspiring blog from Frank van Ooijen, SVP Sustainability with FrieslandCampina and member of SAI Platform's EXCO 12/12/2015, or the day that global leaders gave the green light to the climate deal, boosted the global sense of urgency for the development of a climate smart - and a more sustainable/ circular/less wasteful - agriculture and food system.

[Read more](#)

How SAI Platform contributes to achieving the new Sustainable Development Goals

In September 2015, world leaders adopted the Sustainable Development Goals (SDGs). SAI Platform is strongly committed to contributing to the implementation of the SDGs by helping food and beverage companies to promote sustainable agriculture.

[Read more](#)

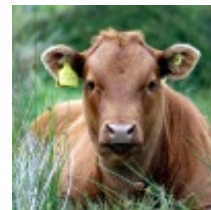
How to Build Supply Security & Resilience with Smallholder

Working Groups



Arable and Vegetable Crops
Sustainable Rice Project sets up FSA-based training program for rice growers in Italy and welcomes new member Tilda.

[Read more](#)



Beef
The group will soon be starting a stakeholder consultation on the new European Beef FSA.

[Read more](#)



Dairy
The group issued a new vision and is now developing a three-year workplan scheduled for mid-January.

[Read more](#)



Fruit and Nuts
The Doñana Strawberry Group met with key stakeholders in the region to advance sustainable water

Farmers

This will be one of the key questions addressed at a conference in London on 22-23 March 2016, organized by the Innovation Forum with SAI Platform as a supporting partner.

[Read more](#)

Insight from Global Sustainability Forum 2015: Sustainability in the food supply chain is hinged on engaging farmers

And yet...farmers are sometimes the last to be consulted on sustainability. This was one of the key challenges discussed at the recent Global Sustainability Forum organized by BordBia in partnership with SAI Platform and WWF.

[Read more](#)

AIM-PROGRESS & SAI Platform: Promoting Sustainability in Supply Chains

AIM-PROGRESS & SAI Platform - two organizations promoting sustainability in supply chains. But who does what? And how do they work together? Read a [one-pager](#) on mutually reinforcing roles and common activities.

Dairy Sector: Ready to Help Achieve Sustainable Development Goals

The Global Dairy Agenda for Action (GDAA) issued a publication describing the dairy sector's contributions to help achieve the new UN's Sustainable Development Goals and the Climate Change Conference (COP21) in Paris in December 2015.

[Read more](#)

[Download the publication](#)

AIJN - Juice CSR Platform update

The Juice CSR Platform had a good year. 2015 achievements include 14 new members; the establishment of a multi-stakeholder governance structure, a thriving annual CSR seminar, the kick-off of the Orange / Brazil Working Group, and the selection of a new Platform management partner.

[Read more](#)

SAI Platform developments

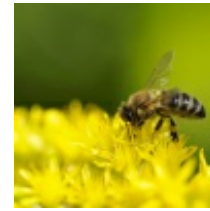
Important decisions on the way we work - Changes in SAI Platform's Working Groups & Committees

We have made some important changes to the way we work: 1. The **Fruit WG** will expand its scope to include coffee and nuts, and has been renamed **Fruit and Nuts Working Group**. 2. We will create two new committees this year: the **Horizon Committee** - for new sustainable agriculture issues, and the **Metrics Committee** - to develop metrics for measuring sustainable farming impacts, and 3. **We will change the way we tackle water:** We will continue to

management in strawberry production.

[Read more](#)

Committees



Biodiversity and Ecosystems

Seeking to set up collaborative biodiversity improvement projects

[Read more](#)



Metrics

This is a new Committee - starting this year - to focus on metrics for measuring sustainable farming impacts.



Horizon

This is a new Committee - starting this year - to identify and address new sustainable agriculture issues.

New Members

SAI Platform welcomes one new member



Tilda

The first company to bring Basmati to the Western World over 40 years ago and has become an international food brand selling in over 50 countries.

[Read more](#)

support local collaborative projects. The Horizon Committee will address new issues, including water related issues, and the Water Committee will be discontinued.

A year of tremendous growth for SAI Platform, from 60 to 80 members

SAI Platform continues to grow rapidly and recently welcomed its 80th member. To manage this growing membership and opportunities organizationally, we have recruited an Operations Manager. Please join us in welcoming [Jane Duncan](#) to our Secretariat team!

SAI Platform Issues New Report Promoting Water Stewardship at Farm and Catchment Level

In this [new publication](#), SAI Platform provides practical guidance on the steps required for farm level water stewardship in a catchment context, thereby complementing a [previous publication](#) "Beyond the farm towards a catchment approach".

What is Sustainable Feed? Multi-stakeholder workshop organized by SAI Platform provides more clarity

In December 2015, over 30 SAI Platform members and experts from a range of organizations, including farmers, academics, trade bodies and NGO's met to debate and increase understanding on what sustainable feeds is about. Next step will be the development of a discussion paper on Sustainable Feed and how best to define it. For more information, contact [Brian Lindsay](#).

SAI Platform organizes a workshop in Sao Paulo, Brazil on February 23rd, 2016

This workshop will provide a platform for discussion on sustainable agriculture challenges, opportunities and local solutions unique to Brazil - and for jointly exploring the relevance of SAI Platform's projects and tools for the Brazilian context. The workshop targets members based or interested in Brazil, and also includes external stakeholders and experts. For more information, contact [Yael Fattal](#).



Farm Sustainability Assessment (FSA) - Update on progress

Discover the Farm Sustainability Assessment (FSA)

Farm Sustainability Assessment (FSA) is a new, highly effective, multi-purpose tool that is helping farmers and food and drink companies around the world produce, sell and source more and more sustainably grown agricultural products. The FSA is free to use for all organizations.

[View a recent webinar](#) introducing FSA to members and non-

members

[View the webinar as a presentation](#)

FSA is used globally in at least 24 countries and is available in 18 languages

During 2015, FSA has developed into a useful tool for farmers and companies globally. In supply chains such as beet sugar, rice, beef, oranges, strawberries and potatoes, key players have committed to, or are already using, FSA to assess, improve and communicate sustainable farming practices. We continue to work hard to facilitate FSA implementation, the launch of the new online FSA IT tool, sharing materials to engage suppliers, supporting smallholder farmers, and a new FSA portal on our website (launched later this month).

[Read more about the FSA IT Tool](#)

Over 25 schemes now benchmarked against FSA - many more in progress and planned

We have benchmarked more than 25 third party standards, company codes, and legislative schemes around the world, with many more in progress and planned. We have received positive feed-back from many of these schemes, including that FSA provides a 'clearing house' and 'one stop shop' for existing schemes, thereby increasing visibility and market recognition for farmers using these schemes.

[Read more](#)

Foundation Skylark adopts SAI Platform's Farm Sustainability Assessment; SAI Platform supports Skylark's unique farmer engagement approach

[Read a news release](#) on how these two organizations are taking their collaboration a step further, each bringing in their unique strengths.

SAI Platform Training & Events

SAI Platform Sustainable Sugar Beet Workshop

28 January 2016, Brussels

Global Forum for Innovations in Agriculture

From 16 - 18 February 2016, Abu Dhabi, UAE

SAI Platform Workshop in Sao Paulo, Brazil

From 22 - 23 February 2016

Innovation Forum Conference - Sustainability for Smallholders

From 22 - 23 March 2016, London, UK

2016 SAI Platform Seminar & General Assembly

From 11 - 14 April 2016 - Castleknock Hotel, Dublin, Ireland

For all SAI Platform upcoming events.

SAI Platform Office and Postal Address:

Avenue des Nerviens 9-31 · 1040 Brussels · Belgium · Tel. +32 (0)2 500 87 57 · Fax +32(0)2 508 10 25

E-mail: info@saiplatform.org · web: www.saiplatform.org